

AVALANCHE PATHS OF THE LIZARD HEAD PASS AREA, COLORADO

108°0'0"W 107°54'36"W

AVALANCHE PATHS

1. Ophir Needles
2. Six
3. Panther
4. Cub
5. Moth
6. Butterfly
7. Drain
8. Waterpipe
9. Priest Lakes
10. Peanut
11. Mudslide
12. White Lizard
13. Snow Spur NW, SW, E
14. Slate Creek Bank
15. Slate Creek F
16. Slate Creek E
17. Slate Creek D
18. Slate Creek C
19. Slate Creek B
20. Slate Creek A
21. Barlow Banks
22. Coke Ovens North
23. Coke Ovens
24. Coke Ovens South

AVALANCHE PATHS

25. Coal Creek North
26. Coal Creek
27. Coal Creek South
28. South Coal Creek South
29. Highline
30. Fry Grade North
31. Baker North
32. Baker
33. Baker South
34. Burns
35. Burns South
36. Peterson
37. Yellow Springs Gully
38. Yellow Springs Wall
39. Ranger Station North
40. Ranger Station South
41. Aztec Gulch
42. Spear
43. Ball Park
44. Rockslide
45. Scotch Creek Trees
46. Scotch Creek
47. Montelores

37°53'24"N

37°48'0"N

37°42'36"N

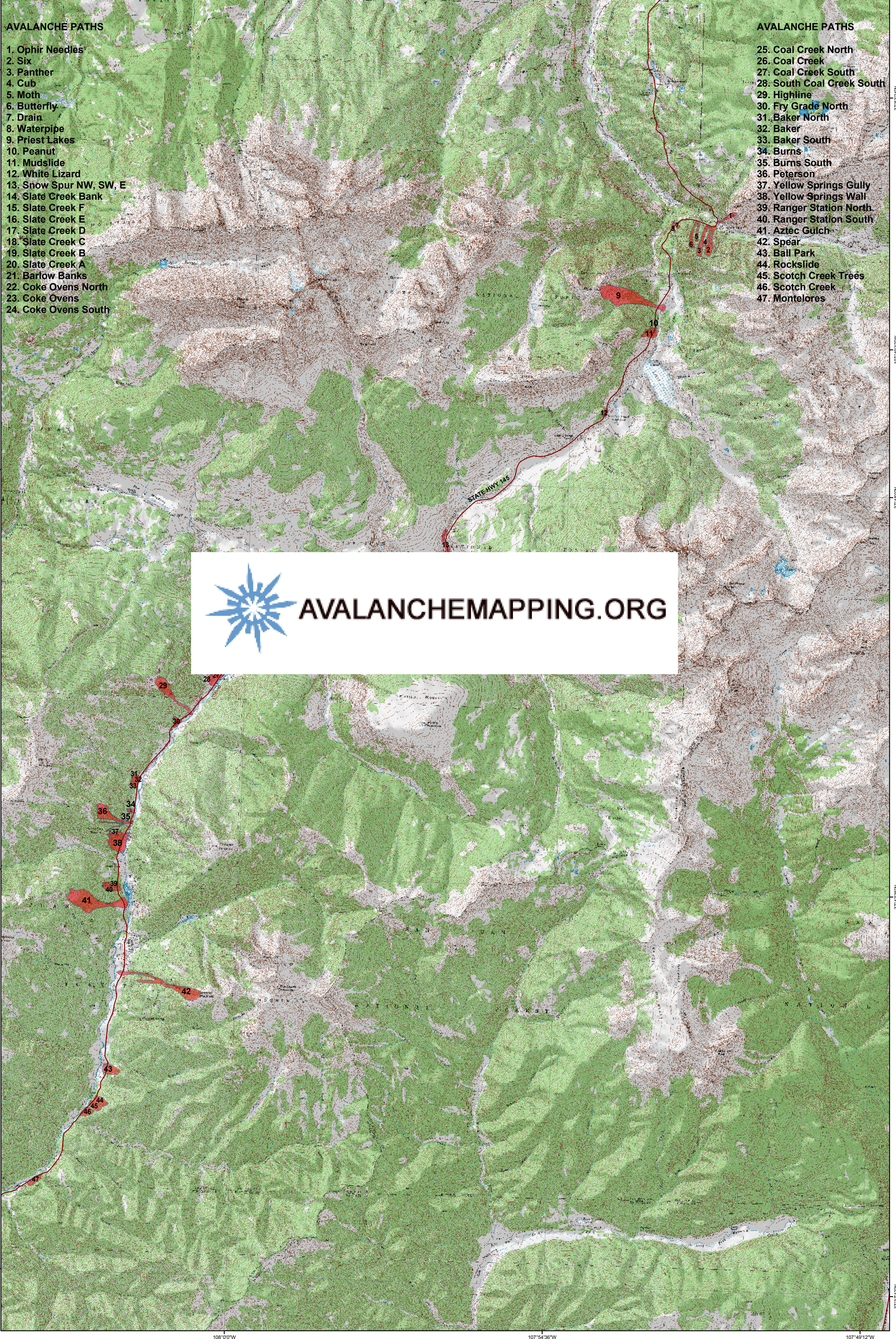
37°37'12"N

107°54'36"W

107°49'12"W

107°49'12"W

107°49'12"W



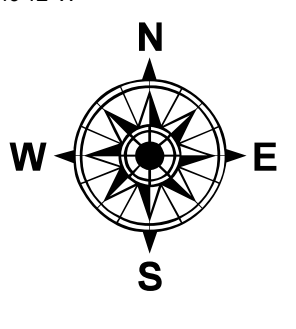
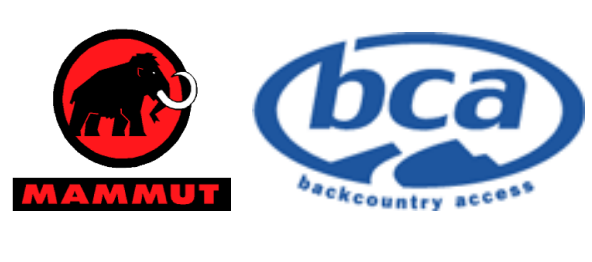
COPYRIGHT 2007
DOUGLAS D SCOTT
AVALANCHEMAPPING.ORG
247, 637B, S. BROADWAY
BOULDER, CO. 80305



THIS DATASET IS TO BE USED AS REFERENCE ONLY AND IS NO SUBSTITUTE FOR SKILL, EXPERIENCE AND PROPER EDUCATION. AVALANCHEMAPPING.ORG IS NOT RESPONSIBLE FOR ANY INJURY, ACCIDENT, OR DEATH AS A RESULT OF USING THIS DATASET.



Data Sources: USGS 24K DRG's and DEM's.
Avalanche data from CAIC/CDOT Avalanche Atlas.
It does not represent all the possible avalanches that could occur.



MP:WCPV02/2007